

LEARNING & GUIDANCE OPPORTUNITIES

Guild members have always been generous in sharing their time and skills with those new to woodworking crafts and we regularly meet at "home groups". We can carefully and gently guide newcomers to the field, keeping you safe and learning at a pace to suit you.

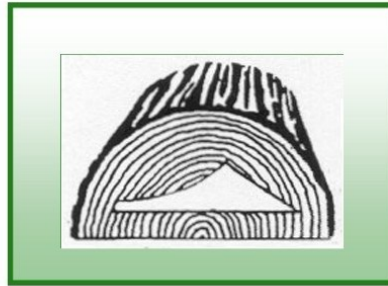


One-on-one teaching

Help with advice about purchasing

the right equipment or even sourcing second-hand gear and tools is also available.

Our Guild is affiliated to the NAW, (The National Association Woodworkers) and this is another great source of knowledge and skill sharing with international demonstrators and workshops.



MEETINGS

Full Guild meetings are held on the second Wednesday of each month, at the MeNZshed,
21 Rangihiroa Street,
Waikanae Beach.

Meetings open around 7:00pm for gathering & greeting before a 7:30pm start.

Membership

The subscription to the Guild is currently \$60 pa. This is discounted to \$50 pa if you are also an individual member of the National Association of Woodworkers.

Application forms to join us are available as a download from our website or from any committee member at a Guild meeting.

CONTACTS:

Check out our website - www.kwwg.org.nz
Gwyneth Evans Ph 021 0637713
woodies14@outlook.com

A GUIDE TO

KAPITI WOODWORKERS GUILD



<http://www.kwwg.org.nz/>

INTRODUCTION

The Kapiti Woodworkers Guild was set up in 1997 to bring together like-minded locals with an interest in various forms of woodworking. While most of the members of the guild are wood turners, we also have some excellent furniture makers, artists and some with a combination of skills and interests.

The guild was set up to foster camaraderie amongst those with similar interests and to encourage learning and sharing opportunities for members.

The monthly meetings are an eclectic mixture of demonstrations, presentations and outside visits on anything from turning techniques to furniture and musical instrument making



Woodturning demonstration

We also have a large store of various timbers suitable for a variety of end uses.

We are a friendly group and have a strong focus on helping each other and using our skills to help other people.

OUT IN OUR COMMUNITY

One strong focus of the guild has always been to share what we can do with our community and we are currently involved with several projects that reflect this.



Wig stand presentation

- Our members make around 100 small bowls each year and fill them with sweets and chocolates that are given to local Cancer Societies and Hospices to distribute at Christmas.

- We also make wig stands for cancer patients who lose their hair through treatment. These are distributed through a

charity called "Look Good, Feel Better" and together with two other regional guilds we make around 150 of these every year.

SALES OPPORTUNITIES

Some of our members are regularly involved with national exhibitions and sell through retail outlets. As amateur woodworkers we also collectively offer our members opportunities to sell their work at some of the events and shows we get involved with, like the Kapiti Arts Trail, A & P shows, or through exhibitions at libraries and craft fairs. Our members find this a valuable opportunity to help fund their hobby.

HOUSE GROUPS

We have a number of 'house' groups operating around the wider Kapiti area. These groups provide a further opportunity each month to explore, share and develop your woodworking skills in more detail.

They provide small group discussion, tuition and practice in response to specific needs or requests and are an ideal way to improve and develop.

The Village Group:

Based in Levin the Village Group meets at 10am on the first Friday of the month alternating at member's home workshops.

The Frank Torrence Group:

Based in the Otaki area this group meets at 10am on the first Wednesday of the month also alternating between member's home workshops.

The Ratanui Group:

Based in Waikanae this group meets at 7.00pm on the third Tuesday of the month, normally at 13 He Awa Crescent, Waikanae.

Full Guild meetings are held on the second Saturday of each month, at the MeNZshed,
21 Rangihiroa Street,
Waikanae Beach.

CONTACTS:

Check out our website - www.kwwg.org.nz

Gwyneth Evans Ph 021 0637713

woodies14@outlook.com